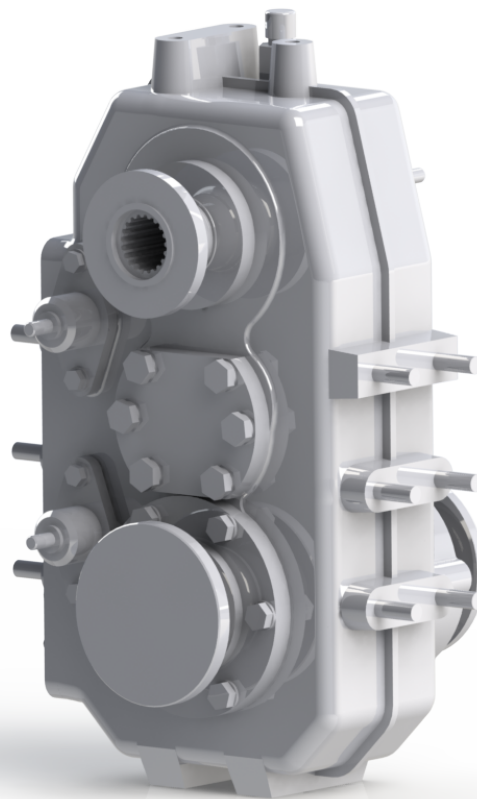




TECHNICAL SHEET



**VERTICAL SPLIT LOW TORQUE
POWER TAKE OFF**

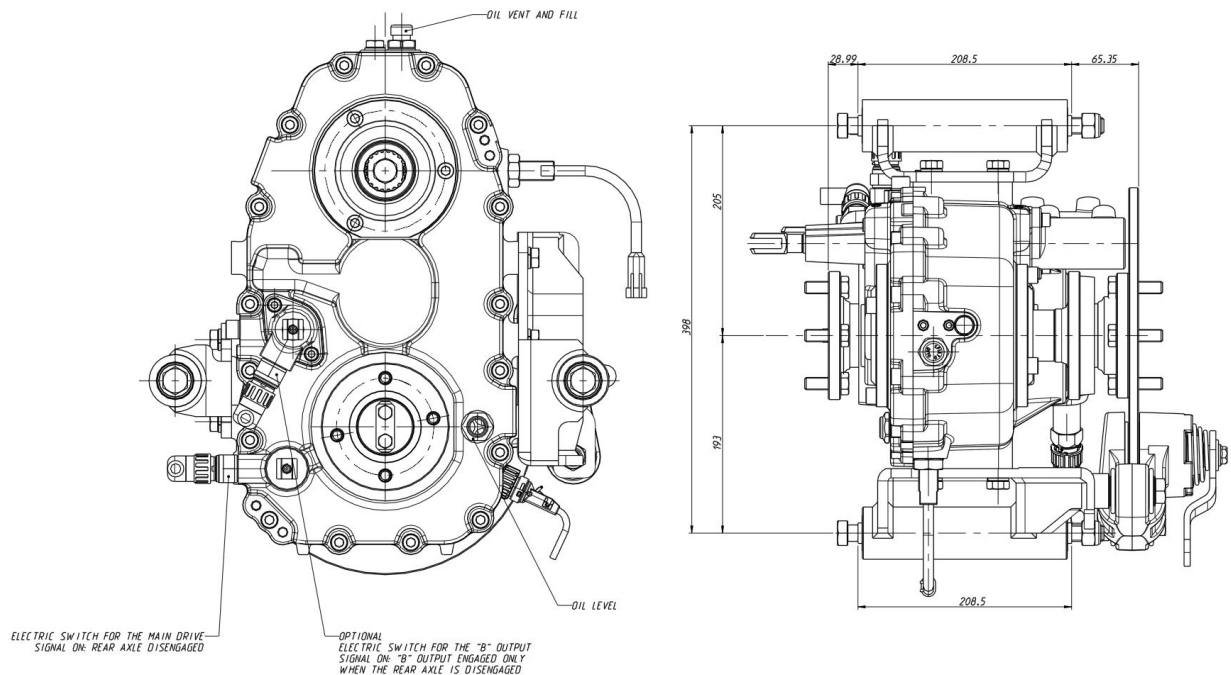
Description

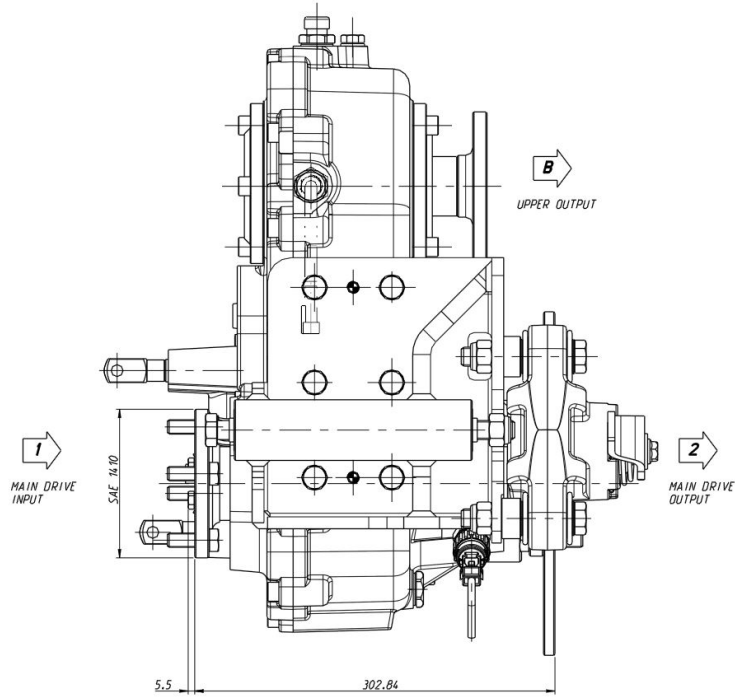


Small Vertical Total split PTO with pneumatic engage for hydraulic and mechanical application system. Max couple main transmission 3.800 Nm, auxiliary exit 500 Nm. With rear Disch hand brake.

PFT 450/2AV is a split shaft power take off that can be mainly mounted on rubbish skip washers, garbage collectors, fire fighting vehicles and sewer cleaning machines.

Dimensions





Technical data

MAIN DRIVE

Maximum continuous torque	3.800 Nm
Maximum instantaneous torque	4.500 Nm
Maximum speed	4.000 rpm - 4.500 rpm

OUTPUT SHAFT

Available drive ratios	1,024	1,270	1,541
Maximum power available at shaft	85	80	80
Maximum instantaneous torque available at shaft	750	700	700
Maximum continuous torque available at shaft	550	500	500
Maximum output speed	4,250		
Direction of rotation	same as engine		
Power take-off operational with vehicle	stationary or in motion		

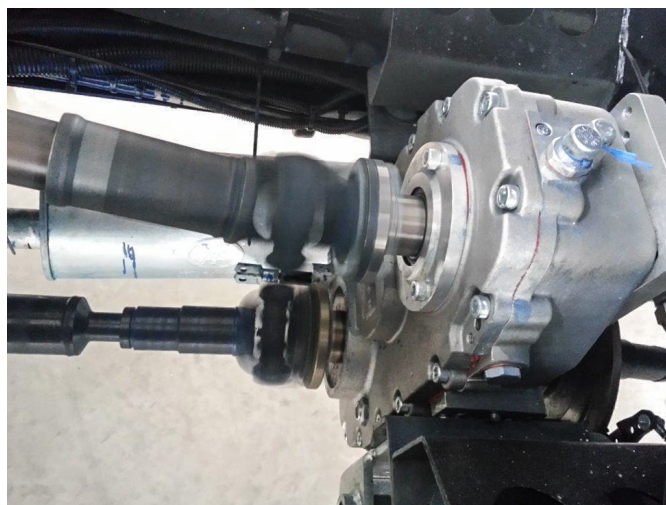
Main features

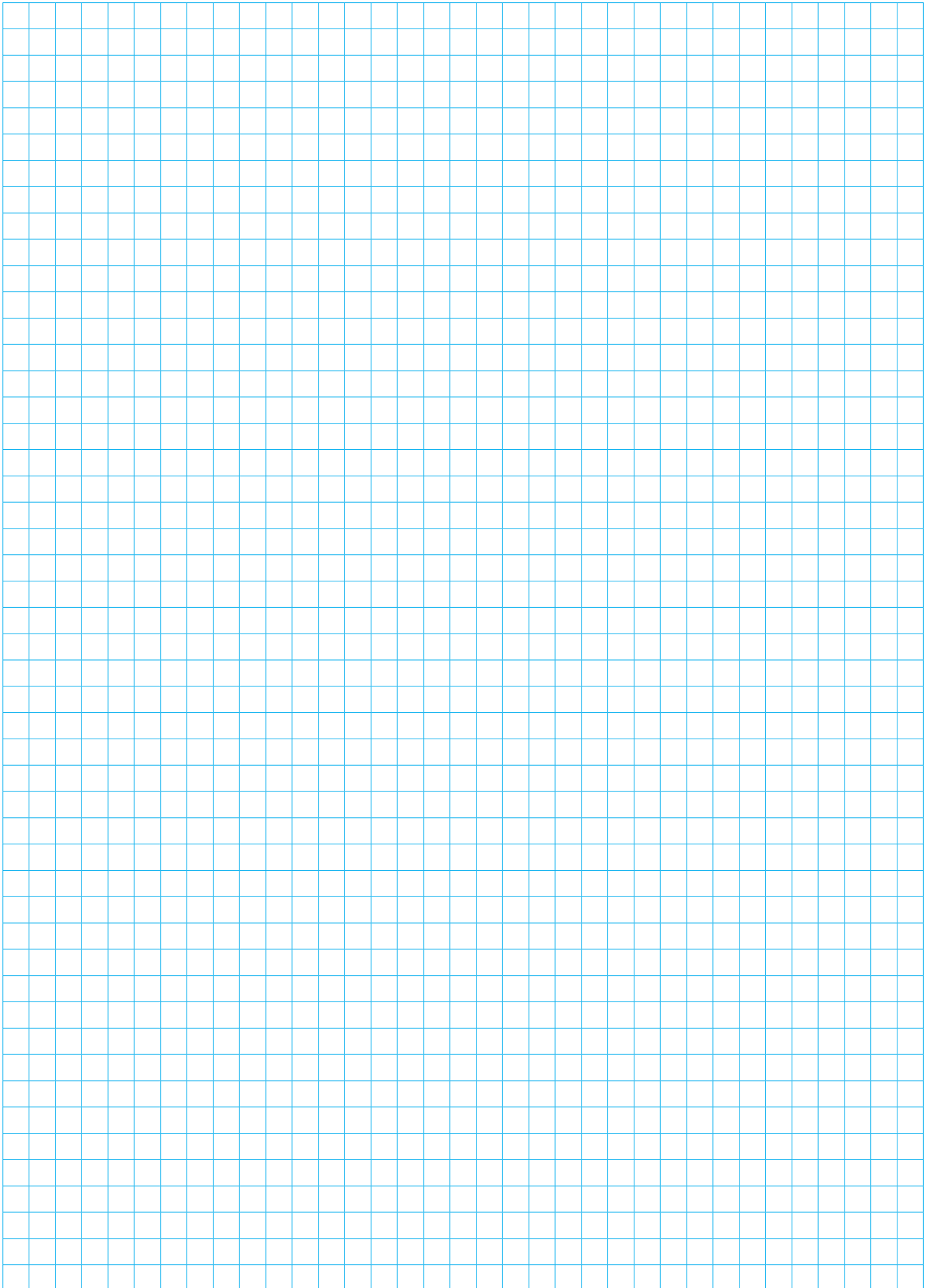
- PFT 450/2AV is a split shaft power take off for light vehicles (50 – 100 kW)
- The standard mounting position of the PTO is vertical, in order to drive devices above vehicle's chassis.
- This PTO can operate directly cardan shafts and/or hydraulic pumps on both gearbox and differential sides
- There are two versions of engagement for the output shaft, both available with **pneumatic/manual control**
 - “SINGLE CONTROL” The PTO can be used with the vehicle at a standstill only. The output shaft is engaged with the disengaging of the differential.
 - “DOUBLE CONTROL” The PTO can be used both with the vehicle at a standstill, and with the vehicle in motion. Two separate and independent controls allow the use of the outputs with the vehicle in motion, but their engagement must be done with the input shaft at a standstill. In this configuration, though, we remind you that output revolutions depend on PTO's ratio, engine revolutions, and on the selected gearbox speed as well

Versions

description	code
Total vertical split pto with pneumatic engage and hand brake mounted	6.923100651-1

Examples of application







MORO KAISER **COMPONENTS**

MORO KAISER S.R.L.

Via Pontebbana, 16
33080 FIUME VENETO (PN) ITALY

Tel. 0434 951.211

Fax: 0434 957.786

infomoro@morokaiser.it